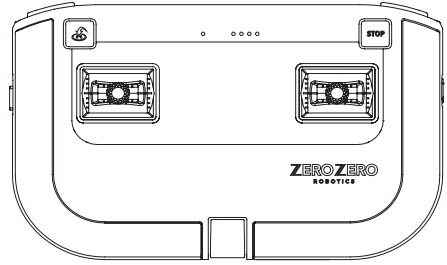
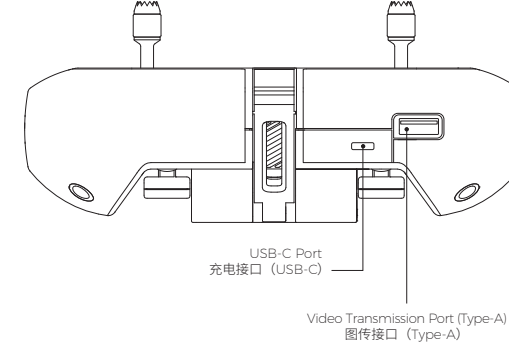
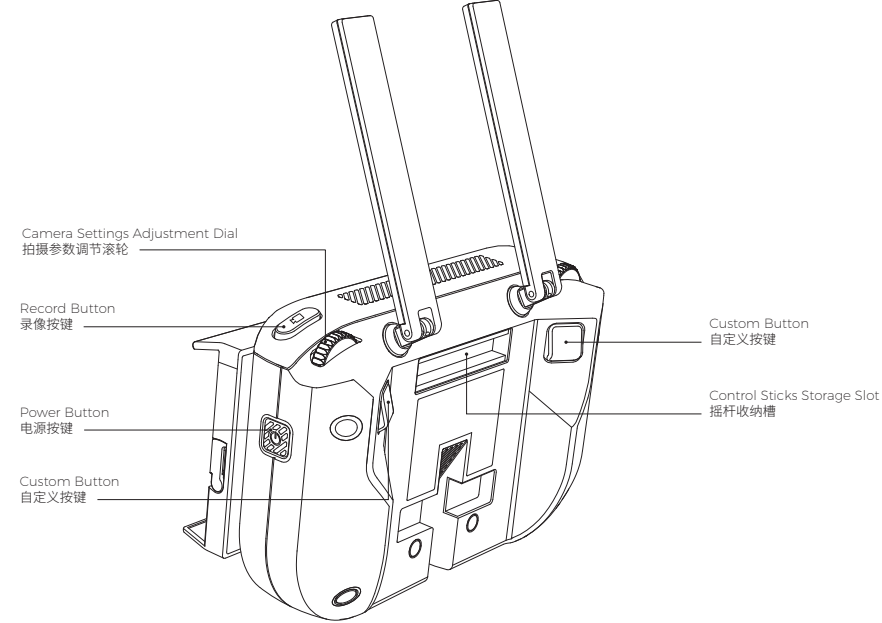
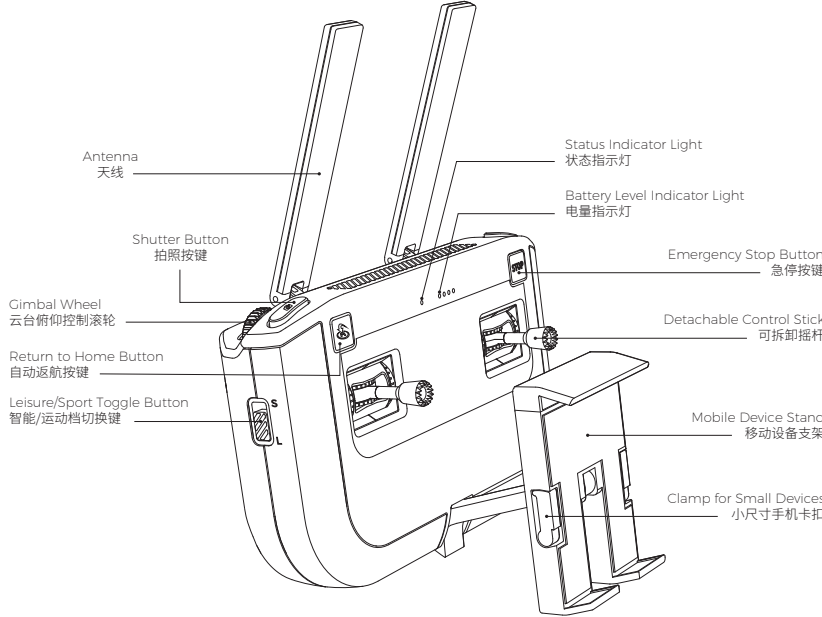


BlastOff Controller
航拍遥控器

ZR-100B

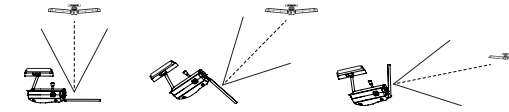


ZERO ZERO
ROBOTICS



- **Best Transmission Range**
During the flight, please adjust the antennas in time to keep the drone in the best transmission range.

- **最佳通信范围**
飞行中，及时调整天线位置以保持飞行器处于最佳通信范围内。



- **For more information, please download the User Manual from the official website.**
This guide is subject to change without prior notice. Please visit the official website for more detailed information.
- **了解更多信息，请前往官网下载《用户手册》。**
本指南如有更新，恕不另行通知。请登录官网获取最新信息。

- According to changes in market demand or production plan, Shenzhen Zero Zero Infinity Technology Co., Ltd. may change the product specifications and appearance. Please contact us if you have any questions.
- 根据市场需求的变化或生产计划的调整，深圳零零无限科技有限公司可能对产品规格、外观进行更改，如您有疑问请联系我们。

Compliance Information
认证信息

FCC Regulations FCC 法律宣告

This equipment complies with part 15 of the FCC Rules. Operation is subject to the following two conditions:

- (1) This device may not cause harmful interference, and
- (2) this device must accept any interference received, including interference that may cause undesired operation.

This equipment has been tested and found to comply with the limits for a Class B digital device, pursuant to Part 15 of the FCC Rules. These limits are designed to provide reasonable protection against harmful interference in a residential installation. This equipment generates, uses and can radiate radio frequency energy and, if not installed and used in accordance with the instructions, may cause harmful interference to radio communications. However, there is no guarantee that interference will not occur in a particular installation. If this equipment does cause harmful interference to radio or television reception, which can be determined by turning the equipment off and on, the user is encouraged to try to correct the interference by one or more of the following measures:

- Reorient or relocate the receiving antenna.
- Increase the separation between the equipment and receiver.
- Connect the equipment into an outlet on a circuit different from that to which the receiver is connected.
- Consult the dealer or an experienced radio/TV technician for help.

RF Exposure Information (SAR) 射频SAR信息

SAR 1g limit: 1.6 W/Kg, SAR Value: Hand-held (10g) : 0.695 W/Kg, Body (1g) : 0.428 W/Kg .

This device meets the government's requirements for exposure to radio waves. This device is designed and manufactured not to exceed the emission limits for exposure to radio frequency (RF) energy. The exposure standard for wireless device employs a unit of measurement known as the Specific Absorption Rate, or SAR.

The SAR limit set by the FCC is 1.6W/Kg. For body worn operation, this device has been tested and meets the FCC RF exposure guidelines for use with an accessory that contains no metal and be positioned a minimum of 1.0 cm from the body. Use of other accessories may not ensure compliance with FCC RF exposure guidelines. If you do not use a body-worn accessory and are not holding the device at the ear, position the handset a minimum of 1.0 cm from your body when the device is switched on.

FCC Note FCC 备注

Changes or modifications not expressly approved by the party responsible for compliance could void the user's authority to operate the equipment.



zerozero.tech

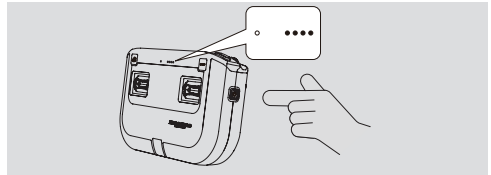
ZERO ZERO
ROBOTICS

© 2020 Zero Zero Robotics - All Rights Reserved
深圳零零无限科技有限公司 版权所有

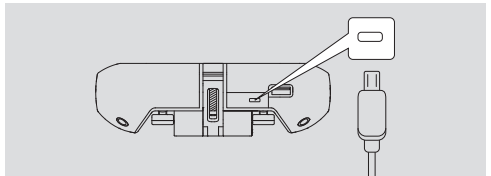
Step 1 Check and Charge the Battery

Please make sure that the BlastOff Controller has sufficient power before flying.

- When the BlastOff Controller is off, press the power button briefly, and the battery level indicator light will show the current battery level.

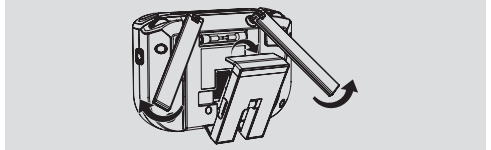


- Charge the BlastOff Controller.

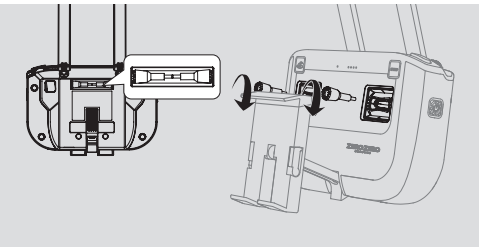


Step 2 Prepare the BlastOff Controller

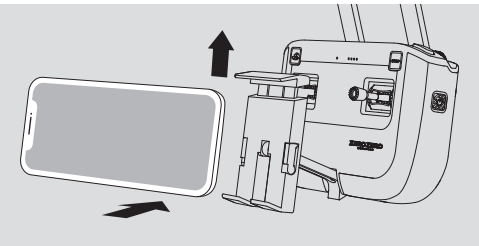
- Unfold the Mobile Device Stand and the Antennas.



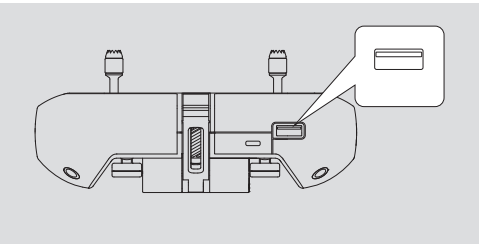
- Install the Control Sticks.



- Place your mobile device on the Mobile Device Stand. Use the clamps to secure smaller devices.



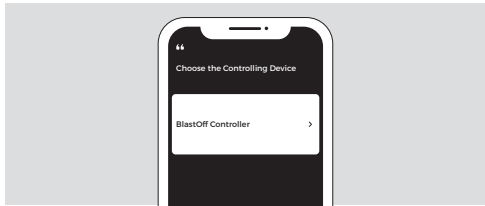
- Use the cable of your mobile device (not included in the package) to connect the BlastOff Controller and your mobile device.



Step 3 Connect the Drone

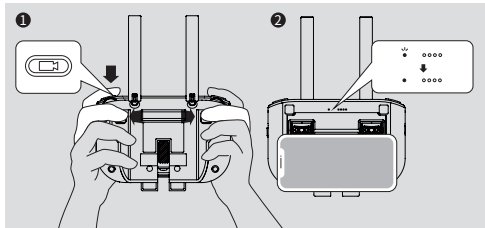
- Press and hold the power button for 2 seconds. The BlastOff Controller will beep when it is successfully turned on.
- Open the app.

Method One: Connect BlastOff Controller and the drone via App



Method Two: Connect the BlastOff Controller and the drone with the combination keys

1. Press and hold the two Custom Buttons + Record Button for two seconds, the Status Indicator Light of the BlastOff Controller will flash green as it starts to connect the drone.
2. The connection is successful when the Status Indicator Light of the BlastOff Controller is solid green.

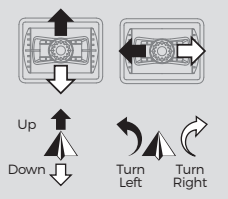


* During the connection process, please keep the BlastOff Controller and the drone within 1 meter of each other.

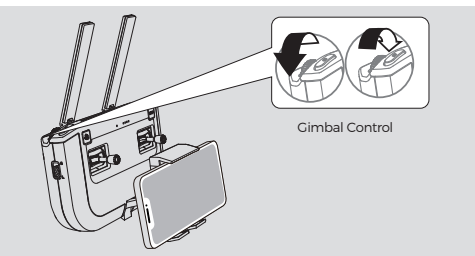
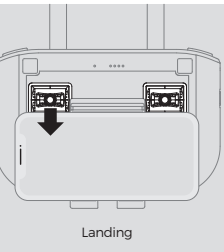
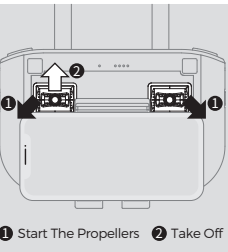
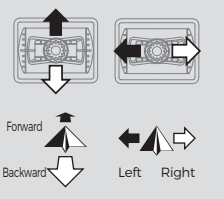
Step 4 Controlling the Drone

The default control mode is shown below. You can choose other control modes in the app.

- Left Stick



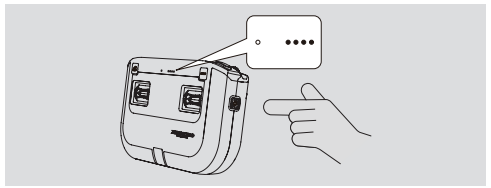
- Right Stick



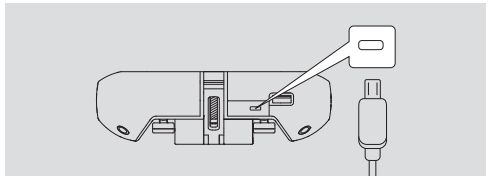
第一步 查看电量和充电

飞行前请确保航拍遥控器有充足的电量。

- 遥控器关闭状态下，短按电源键，电量指示灯将显示遥控器剩余电量。



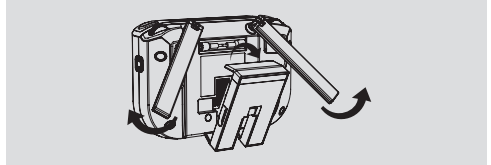
- 给遥控器充电。



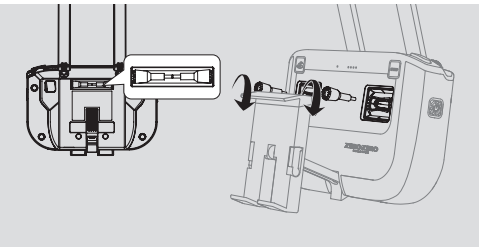
接入 USB-C 充电线 完全充满大约需要 2.5 小时

第二步 准备航拍遥控器

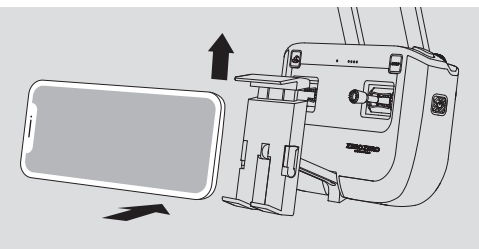
- 展开移动设备支架和天线。



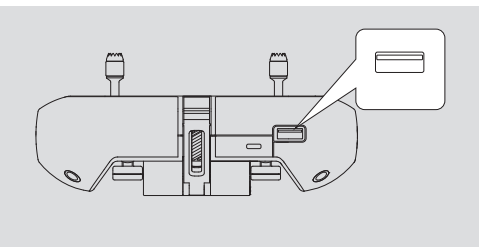
- 取出收纳槽中的摇杆并安装。



- 固定移动设备。（可打开支架上的卡扣来夹持小尺寸设备）



- 使用移动设备数据线（自备）连接。



第三步 连接飞行器

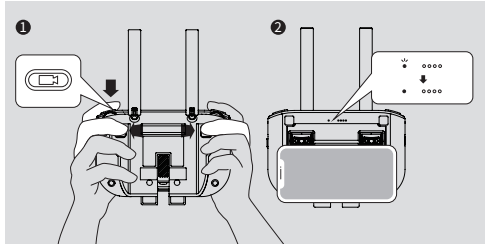
- 长按电源键 2 秒，听到开机声后，遥控器开机成功。
- 打开App。

方法一：通过 App 连接航拍遥控器和飞行器



方法二：通过组合键连接航拍遥控器和飞行器

1. 长按组合键（两个自定义按键+录像按键）两秒，遥控器状态指示灯绿灯闪烁，开始连接飞行器。
2. 连接成功，遥控器状态指示灯绿灯常亮。

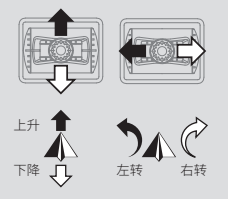


* 连接过程中，请保持航拍遥控器与飞行器相距 1 米以内。

第四步 使用航拍遥控器控制飞行

摇杆模式默认为美国手。或在 App 里选择其他摇杆模式。

- 左摇杆



- 右摇杆

