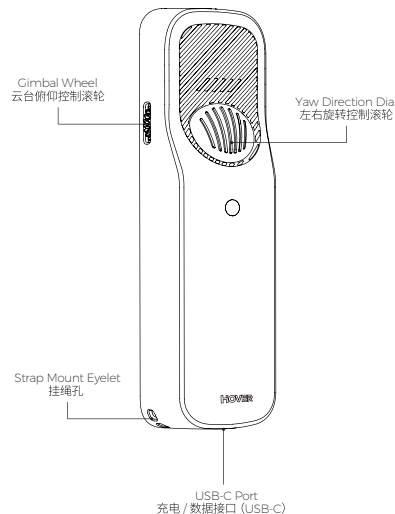


- \* For more information, please download the User Manual from the official website.  
This guide is subject to change without prior notice. Please visit the official website for more detailed information.
- \* 了解更多信息，请前往官网下载《用户手册》。  
本指南如有更新，恕不另行通知。请登录官网获取最新信息。
- \* Product certification information is available on Home > Settings > Compliance information page.
- \* 请在【首页】>【设置】>【认证信息】页查看产品认证信息。

\* CMIIT ID: 2019AP7432  
FCC ID: 2AIDWZR-100A



- \* According to changes in market demand or production plan, Shenzhen Zero Zero Robotics Technology Co., Ltd. may change the product specifications and appearance. Please contact us if you have any questions.
- \* 根据市场需求的变化或生产计划的调整，深圳零零无限科技有限公司可能对产品规格、外观进行更改，如您有疑问请联系我们。

## Compliance Information 认证信息

### FCC Regulations FCC 法律宣告

This equipment complies with part 15 of the FCC Rules. Operation is subject to the following two conditions:

- (1) This device may not cause harmful interference, and
- (2) this device must accept any interference received, including interference that may cause undesired operation.

This equipment has been tested and found to comply with the limits for a Class B digital device, pursuant to Part 15 of the FCC Rules. These limits are designed to provide reasonable protection against harmful interference in a residential installation. This equipment generates, uses and can radiate radio frequency energy and, if not installed and used in accordance with the instructions, may cause harmful interference to radio communications. However, there is no guarantee that interference will not occur in a particular installation. If this equipment does cause harmful interference to radio or television reception, which can be determined by turning the equipment off and on, the user is encouraged to try to correct the interference by one or more of the following measures:

- Reorient or relocate the receiving antenna.
- Increase the separation between the equipment and receiver.
- Connect the equipment into an outlet on a circuit different from that to which the receiver is connected.
- Consult the dealer or an experienced radio/TV technician for help.

### RF Exposure Information (SAR) 射频 SAR 信息

This device meets the government's requirements for exposure to radio waves. This device is designed and manufactured not to exceed the emission limits for exposure to radio frequency (RF) energy. The exposure standard for wireless device employs a unit of measurement known as the Specific Absorption Rate, or SAR.

For body worn operation, this device has been tested and meets the FCC RF exposure guidelines for use with an accessory that contains no metal and be positioned a minimum of 1.0 cm from the body.

### FCC Note FCC 备注

Changes or modifications not expressly approved by the party responsible for compliance could void the user's authority to operate the equipment.



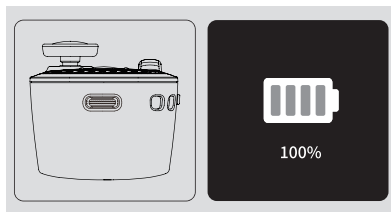
zzrobotics.com

ZERO ZERO  
ROBOTICS

© 2020 Zero Zero Robotics - All Rights Reserved  
深圳零零无限科技有限公司 版权所有

HOVER2

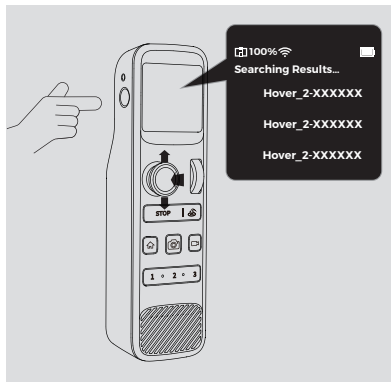
## ■ Charge the Palm Pilot



Plug the charging cable into the USB-C Port. It takes about 2.5 hours to fully charge.

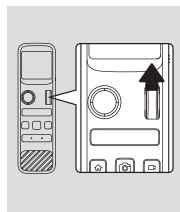
## ■ Connect Hover 2

Press and hold the power button for 2 seconds to turn on the Palm Pilot. Then, select and connect to the Hover 2 hotspot with the Direction Control Stick (press down to select).

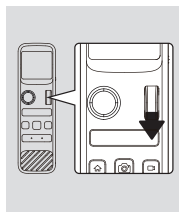


\* If the Hover 2 hotspot is not found, press and hold the Wi-Fi / RC toggle button on the drone for 4s, and try to connect again after hearing the beep.

## ■ Takeoff Hover 2 ■ Landing Hover 2

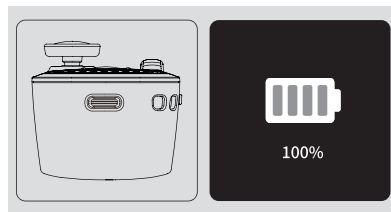


Push the Altitude Control Wheel up for 2 seconds to takeoff.



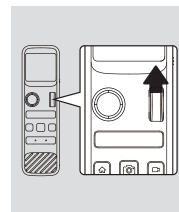
Push the Altitude Control Wheel down until Hover 2 lands on the ground, hold for 2 seconds to stop the propellers.

## ■ 给掌上 RC 充电

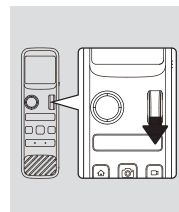


接入 USB-C 充电线 完全充满大约需要 2.5 小时

## ■ 放飞 Hover 2 ■ 降落 Hover 2

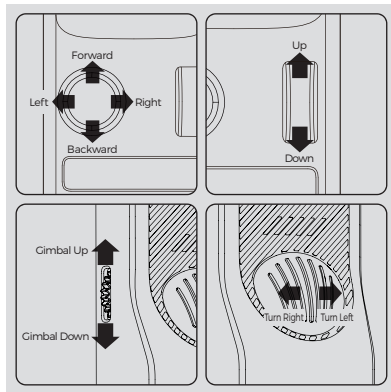


向上推上下方向滚轮 2 秒，Hover 2 将自动起飞。



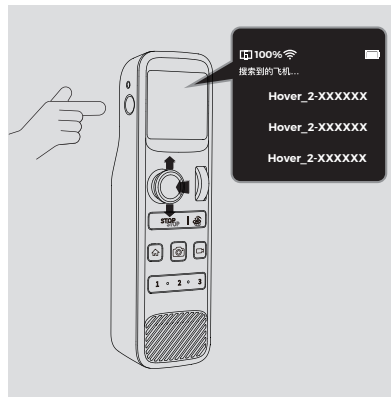
向下推上下方向滚轮至 Hover 2 落地，落地后继续推 2 秒，螺旋桨将停止旋转。

## ■ Controlling Hover 2



## ■ 连接 Hover 2

长按电源键 2 秒开机，使用水平方向控制摇杆选择并按下摇杆连接 Hover 2 热点。



\* 若未找到 Hover 2 热点，请长按机身上的 Wi-Fi / RC 控制模式切换按键 4 秒，听到滴滴声后再次尝试连接。

## ■ 使用掌上 RC 控制飞行

